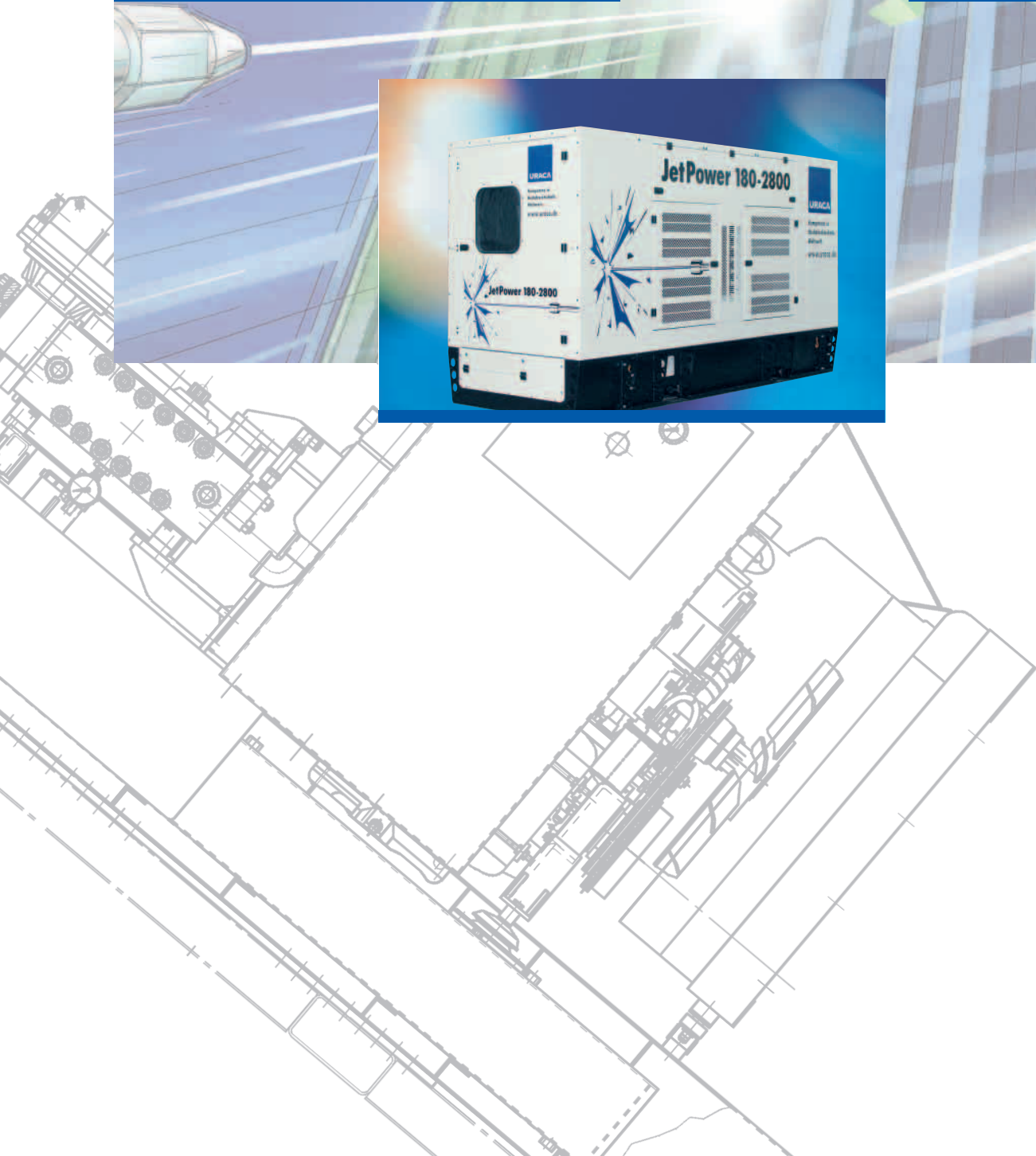


# High Pressure Pump Units JetPower



# Professional High Pressure Cleaning with URACA JetPower up to 2.800 bar / 40.000 psi



## A new pump unit generation up to 2.800 bar / 40.000 psi: Perfect high pressure cleaning with pure dynamics.

The high end pump units in the URACA JetPower series were designed for particularly efficient, user-friendly and economical high pressure cleaning. Two power ranges (125 and 180kW) open up wide fields of applications suitable for all cleaning tasks. The essential demands in the everyday practice of cleaning professionals were taken into account in the new design of the URACA pump units. The weight/performance ratio is outstanding.

JetPower is more flexible than ever due to the great variety of all kind of cleaning tools.

## JetPower - Hightech in the field of high pressure cleaning

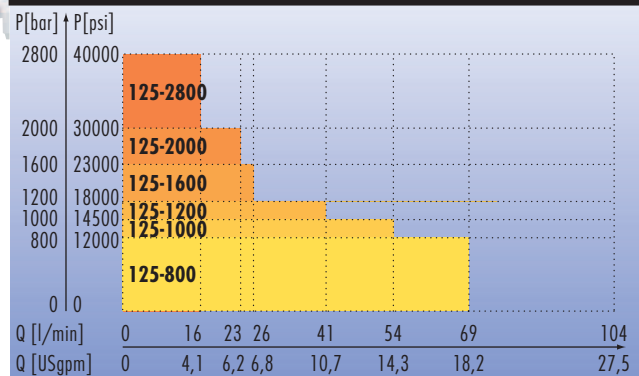
- Maximum performance for minimum weight and compact design
- Maximum consumer flexibility: control of spray guns, spray lances and dump guns
- Water supply of pump unit isolated from the tap
- Booster pump
- Electronic speed regulation and motor control
- Full performance even under extreme conditions
- Parallel operation of two pump units possible
- Pneumatic valves for smooth switch over
- Functional design
- Modern water cooled diesel engine compliant with future EC exhaust standards

## JetPower - absolutely economic

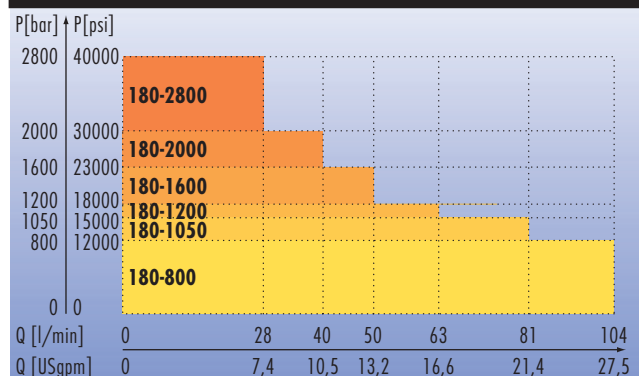
- Wear resistant and user-friendly design for heavy duty performance.
- Return of by-pass and cooling water to surge tank.
- Maintenance-free coupling

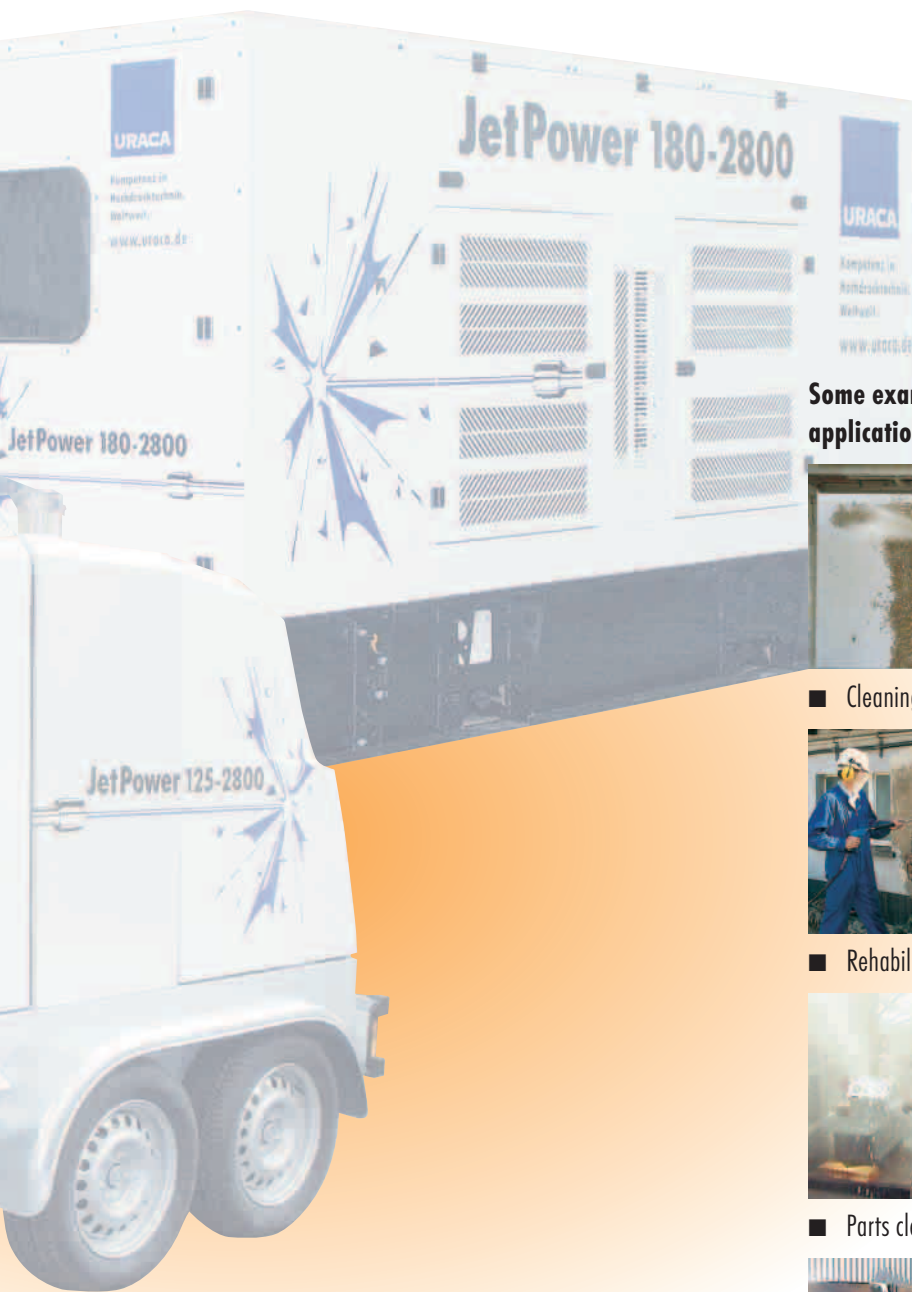


Performance Chart JetPower 125



Performance Chart JetPower 180





Some examples from the wide range of URACA JetPower applications:



■ Cleaning of facades



■ Cleaning of concrete surfaces



■ Rehabilitation of facades



■ Cleaning of vehicles



■ Parts cleaning, deburring



■ Heat exchanger cleaning



■ Paint stripping, rust removal



■ Removal of drilling cores

### Applications

- Cleaning of pipe lines
- Cleaning of pipes and bundles (outside)
- Cleaning of pipes and bundles (inside)
- Cleaning of grids and floors
- Parts cleaning
- Cleaning and resurfacing of concrete
- Jet cutting of concrete
- Cleaning of fittings
- Cleaning of steel constructions
- Cleaning and rehabilitation of facades
- Road stripping
- Vessel cleaning
- Reactor cleaning



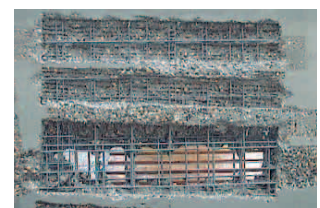
■ Surface cleaning



■ Road stripping



■ Manual surface cleaning



■ Demolition of concrete

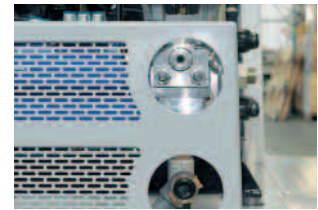
# JetPower 125 – Light, Flexible, Dynamic

The 125 kW-series is compact, light, flexible and powerful thus allowing both high performance and mobility.

- 125 kW diesel engine
- One consumer pump unit
- Low weight
- Compact design
- Easy handling due to trailer version
- Flexible control
- High stability
- Isolation of vibrations subject to design
- Long lifetime due to torsion-proof design
- Connection on suction and discharge side, external access
- Tank for service water
- New diaphragm safety and unloading valve
- Easy operation via URACA JetPower control system



Ultra-high performance pump KD 716 of low weight and compact design.



External and easy access to suction and discharge-sided connections.

**Versions:** without cover with cover mobile



JetPower 125 is available with various options, e.g. with or without noise hood, in stationary design or as trailer version.



## Flexibility

- Six standard ranges for pressure and flow rate dependent on kind of application
  - In mobile or stationary design
  - Central lifting device, optionally
  - With or without noise hood
  - Special cleaning accessories suitable for all tasks
- Use of various tools, such as spray guns, spray lances or dump guns



Ergonomically designed. Easy access for maintenance work due to tilt top protection hood.

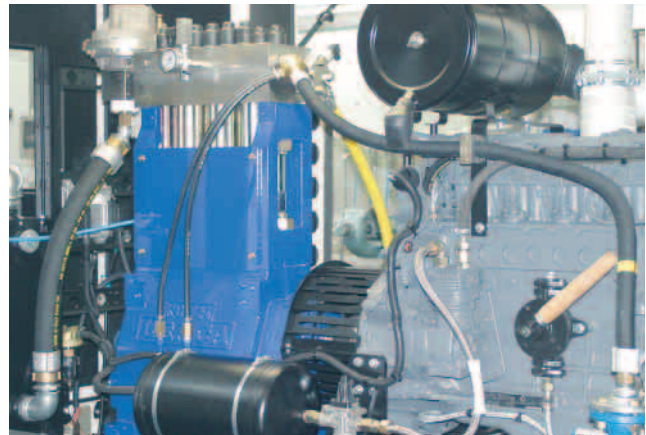
JetPower 125	125-800	125-1000	125-1200	125-1600	125-2000	125-2800
Pump type	KD 716 version C	KD 716 version C	KD 716 version C	KD 716 version D	KD 716 version D	KD 716 version D
Gear ration	3,9	3,9	3,9	3,9	3,9	3,9
Plunger [mm]	28	25	22	19	17	15
Pressure, max [bar/psi]	800 / 11.600	1.000 / 14.500	1.200 / 17.400	1.600 / 23.200	2.000 / 29.000	2.800 / 40.000
Flow rate, min - max [l/min]	31 - 69	24,5 - 54	18,5 - 40,5	14 - 26	10,5 - 23,5	8,3 - 15,5
[gpm]	8,2 - 18,2	6,5 - 14,3	4,9 - 10,7	3,7 - 6,8	2,8 - 6,2	2,2 - 4,1
Power max [kW/HP]	99,5 / 133	96 / 129	87 / 117	74 / 99	82 / 110	75 / 101
Suction connection	C-coupling or VK50	C-coupling or VK50	C-coupling or VK50	GEKA1"	GEKA1"	GEKA1"
Discharge connection	M24 x 1,5 DKO-S	M24 x 1,5 DKO-S	M24 x 1,5 DKO-S	UNF9 / 16-18 LH	UNF9 / 16-18 LH	UNF9 / 16-18 LH
Pump speed, min - max [rpm]	257 - 565	257 - 565	257 - 565	257 - 480	257 - 565	257 - 480
Motor speed [rpm]	1.000 - 2.200	1.000 - 2.200	1.000 - 2.200	1.000 - 1.870	1.000 - 2.200	1.000 - 1.870
Drive	Deutz Diesel 4cyl.	Deutz Diesel 4cyl.	Deutz Diesel 4cyl.	Deutz Diesel 4cyl.	Deutz Diesel 4cyl.	Deutz Diesel 4cyl.
Motor power [kW/HP]	125 / 168	125 / 168	125 / 168	125 / 168	125 / 168	125 / 168
High pressure valve	MDSV	MDSV	MDSV	MDSV	MDSV	MDSV
Booster pump	impeller max. 2bar@120 lit	impeller max. 2bar@120 lit	impeller max. 2bar@120 lit	impeller max. 2bar@120 lit	impeller max. 2bar@120 lit	impeller max. 2bar@120 lit
Water tank [l]	84	84	84	84	84	84
Fuel tank [l]	200	200	200	200	200	200
<b>Stationary without cover:</b>						
Dimensions LxWxH [mm]	2.500 x 1.400 x 1.630	2.500 x 1.400 x 1.630	2.500 x 1.400 x 1.630	2.500 x 1.400 x 1.630	2.500 x 1.400 x 1.630	2.500 x 1.400 x 1.630
Weight <sup>1</sup> [kg]	1.750	1.750	1.750	1.750	1.750	1.750
<b>Stationary with cover:</b>						
Dimensions LxWxH [mm]	2.500 x 1.400 x 1.630	2.500 x 1.400 x 1.630	2.500 x 1.400 x 1.630	2.500 x 1.400 x 1.630	2.500 x 1.400 x 1.630	2.500 x 1.400 x 1.630
Weight <sup>1</sup> [kg]	1.900	1.900	1.900	1.900	1.900	1.900
<b>Mobile:</b>						
Dimensions LxWxH [mm]	2.500 x 1.400 x 1.980	2.500 x 1.400 x 1.980	2.500 x 1.400 x 1.980	2.500 x 1.400 x 1.980	2.500 x 1.400 x 1.980	2.500 x 1.400 x 1.980
Weight <sup>1</sup> [kg]	2.100	2.100	2.100	2.100	2.100	2.100

<sup>1</sup> Weight specifications without water and fuel. Subject to technical alterations and/or changes in contents.  
Conversion: 1 bar = 14,5038 psi, 1 l = 0,26417 US Gal., 1 kW = 1,3410 HP, 1 mm = 0,03937 inch.

# JetPower 180 – Pure Power for Cleaning Professionals

The characteristic feature of the 180 kW-series is the high performance rate.

- 180 kW diesel engine
- Multi-consumer pump unit
- Low weight
- Compact design
- Long lifetime due to high torsion-proof design
- Compact noise hood
- Flexible control
- High stability
- Vertical pump design
- Easy access to pump without need to disassemble other components
- Access for maintenance, also possible from top
- Easy operation via URACA JetPower control system



High pressure pump KD 724 in vertical design for ultra-high performance rates.

JetPower 180	180-800	180-1050	180-1200	180-1600	180-2000	180-2800
Pump type	KD 724 version B	KD 724 version C	KD 724 version C	KD 724 version D	KD 724 version D	KD 724 version D
Gear ration	3,73	3,73	3,73	3,73	3,73	3,73
Plunger [mm]	32	28	25	22	20	18
Pressure, max [bar/psi]	800 / 11.600	1.050 / 15.230	1.200 / 17.400	1.600 / 23.200	2.000 / 29.000	2.800 / 40.000
Flow rate, min - max [l/min]	52 - 104	40,5 - 81	31,5 - 63	25 - 50	20 - 40	14 - 28
[gpm]	13,7 - 27,5	10,7 - 21,4	8,3 - 16,6	6,6 - 13,2	5,3 - 10,5	3,7 - 7,4
Power max [kW/HP]	150 / 201	152 / 204	135 / 181	141 / 189	137 / 184	120 / 161
Suction connection	C-coupling or VK50	C-coupling or VK50	C-coupling or VK50	GEKA1"	GEKA1"	GEKA1"
Discharge connection	M36 x 2 DKO-S	M36 x 2 DKO-S	M36 x 2 DKO-S	UNF9 / 16-18 LH	UNF9 / 16-18 LH	UNF9 / 16-18 LH
Pump speed, min - max [rpm]	282 - 563	282 - 563	282 - 563	282 - 563	282 - 563	282 - 483
Motor speed [rpm]	1.050 - 2.100	1.050 - 2.100	1.050 - 2.100	1.050 - 2.100	1.050 - 2.100	1.050 - 1.800
Drive	Deutz Diesel 6cyl.	Deutz Diesel 6cyl.	Deutz Diesel 6cyl.	Deutz Diesel 6cyl.	Deutz Diesel 6cyl.	Deutz Diesel 6cyl.
Motor power [kW/HP]	177 / 237	177 / 237	177 / 237	177 / 237	177 / 237	177 / 237
High pressure valve	MSUV + GRV	MSUV + GRV	MSUV + GRV	MSSV + PSV	MSSV + PSV	MSSV + PSV
Booster pump	centrifugal 2bar@120 lpm	centrifugal 2bar@120 lpm	centrifugal 2bar@120 lpm	centrifugal 2bar@120 lpm	centrifugal 2bar@120 lpm	centrifugal 2bar@120 lpm
Water tank [l]	150	150	150	150	150	150
Fuel tank [l]	300	300	300	300	300	300
<b>Stationary without cover:</b>						
Dimensions LxWxH [mm]	3.700 x 1.500 x 2.050	3.700 x 1.500 x 2.050	3.700 x 1.500 x 2.050	3.700 x 1.500 x 2.050	3.700 x 1.500 x 2.050	3.700 x 1.500 x 2.050
Weight <sup>1</sup> [kg]	3.400	3.400	3.400	3.400	3.400	3.400
<b>Stationary with cover:</b>						
Dimensions LxWxH [mm]	3.700 x 1.500 x 2.100	3.700 x 1.500 x 2.100	3.700 x 1.500 x 2.100	3.700 x 1.500 x 2.100	3.700 x 1.500 x 2.100	3.700 x 1.500 x 2.100
Weight <sup>1</sup> [kg]	3.600	3.600	3.600	3.600	3.600	3.600

<sup>1</sup> Weight specifications without water and fuel. Subject to technical alterations and/or changes in contents.  
Conversion: 1 bar = 14,5038 psi, 1 l = 0,26417 US Gal., 1 kW = 1,3410 HP, 1 mm = 0,03937 inch.



JetPower 180 is available with various options, e.g. with or without noise hood, in stationary design or as trailer version.

Versions:	without cover	with cover	mobile



Ergonomic, comprehensible and flexible control.



Optimum access due to many tiltable and removable protection hood components.

### Flexibility

- Six standard ranges for pressure and flow rate dependent on the kind of application
- A variety of options for individual consumer requirements and tools
- Stationary pump unit. Mobile design upon request.
- Special cleaning accessories suitable for all tasks
- Connection facilities for all current tool systems, manually or automatically operated (spray guns, spray lances, dump guns etc.)

JetPower 180 – Options	
<b>Option 1</b>	Different capacities for each large or small consumer
<b>Option 2</b>	Different capacities for one large or two small consumers
<b>Option 3</b>	Different capacities for one large or two small consumers with /without hose relief

# URACA's Extensive Range of Accessories

**URACA**

The cleaning system supplier URACA offers a wide range of accessories suitable for all kinds of applications. Please ask for advice.



## Standard accessories

- High pressure hoses
- Spray guns
- Spray lances
- Dump guns
- Extension pipes
- Nozzles
- Fittings
- Remote controls
- Foot-operated valves
- Foot-operated switches and many others...

URACA Pumpenfabrik GmbH & Co. KG  
 Sirchinger Straße 15  
 D-72574 Bad Urach, Germany  
 Phone +49 (71 25) 133-0  
 Fax +49 (71 25) 133-202  
 info@uraca.de  
 www.uraca.de

Certified acc. to:  
 ■ DIN EN ISO 9001:2000 by LRQA  
 ■ VGB KTA 1401  
 ■ Gost

## Rotating mortising nozzles

A variety of nozzles for all kinds of applications. No additional energy is necessary.



## Water sand jet cleaning system

Adaptable to URACA spray guns and spray lances without any problems. Improves the cleaning effect. Particularly suited to structured surfaces. Also available as abrasive jet cutting head.



## Pipe cleaning

- Rigid and flexible lances
- Foot-operated valves
- Safety devices
- Pipe cleaning nozzles for small and large pipe diameters
- Special nozzles up to 3 metres pipe diameter (DFK)
- Semi and fully automatic heat exchanger cleaning devices for inside and outside



## Tank and vessel cleaning accessories

- Small vessel cleaners
- High pressure tank cleaning heads up to 1.600 bar
- Rotating cleaning heads
- Manual positioning devices
- Semi-and fully automatic or manual tank cleaning systems, electrically, hydraulically or pneumatically driven

